

Air Zoom Elite 3 [Womens]

LIGHTWEIGHT



FOCUS ON FIT

A new QMR-3 last delivers an "Elite shoe fit." The fit around the midfoot and heel is snug to provide lock down necessary for faster-paced training or racing, while the fit through the forefoot is more accommodating to prevent pressure build-up across the metatarsals. The accommodating forefoot fit also provides a more comfortable environment for the foot, whether you are running a mile or a marathon.

QMR-3



WHAT'S NEW

Updates from the Air Zoom Elite 2:



- New, dual-density Ortholite Heel Cradle sockliner provides exceptional comfort and support directly underfoot.



- Soft yet resilient crash pad features women's-specific geometry and is extended through the forefoot to help slow the rate of pronation, whether you are jogging or running at race pace.



- Women's-specific Natural Motion Engineering technology principles throughout the shoe result in a smoother ride and footstrike management that's more effective and more seamless.

Full-length Zoom Air unit sits directly underfoot for exceptional cushioning, response and durability.

Women's-specific, radiused crash pad is articulated to absorb the shock at initial impact and moderate the range and rate of pronation before midstance. It's extended through the forefoot to accommodate faster-paced, midfoot strikers.



The Bowerman Series is intended for recreational to elite runners who rely on consistent product that fits and feels great, has protective cushioning and provides stability appropriate for running in every day or every once in awhile.



Dynamic arch bridge midfoot shank enhances support and medial stability, while allowing a degree of torsional rotation to unlock the foot's intrinsic stabilizing mechanisms.

Lightweight Phylon midsole features a high-density medial post to help reduce the range of excessive pronation through midstance.



CONTACT PHASE

Beveled articulated crash pad and a full-length Zoom Air unit work in tandem to absorb the shock at initial impact and help moderate both the range and rate of pronation for a smoother landing that reduces the load on the ankle and knee.

MIDSTANCE PHASE

A high-density medial post, arch bridge midfoot shank and midfoot overlays work as one to progressively moderate the degree of excessive pronation. An arch bridge midfoot shank helps smooth the transition from contact through propulsion.

PROPULSION PHASE

Full-length Zoom Air cushioning combines with strategically-placed Duralon panels, deep flex grooves and a solid rubber Waffle outsole for cushioning, response and durability while also promoting the natural resupination of the foot for a more neutral, efficient toe-off.

ORTHOLITE HEEL CRADLE SOCKLINER



Women's-specific, dual-density Ortholite Heel Cradle sockliner provides a custom fit, improved underfoot support and support around the heel. The sockliner is engineered with permanent, non-migratory antimicrobial properties to help keep odor-causing bacteria at bay for a cool, comfortable environment underfoot.

Air Zoom Elite 3 [Womens]



ZOOM
AIR



RUN



SUGGESTED PRICE \$100.00
CATEGORY Running
GENDER Womens
SILO Bowerman Series/
 Lightweight
SEASON Fall 2007

UPPER

- 1 Large expanses of open-mesh enhance comfort and breathability.
- 2 Strategically-placed synthetic leather overlays work in concert with the lacing system for a great fit and targeted support.
- 3 Flat-seam internal stitching keeps chafing at bay.
- 4 Built around a new "Elite shoe fit" (QMR-3) last that provides improved comfort and fit without sacrificing the support necessary for higher-paced training.
- 5 Women's-specific, dual-density Ortholite Heel Cradle sockliner provides a custom fit and enhances underfoot support. Inherently anti-microbial to help keep odor causing bacteria at bay.



MIDSOLE

- 6 Women's-specific radiused crash pad absorbs the initial shock of impact and helps moderate both the range and rate of pronation before midstance. Crash pad is extended further forward to accommodate fast-paced midfoot strikers.
- 7 Full-length Zoom Air unit delivers responsive cushioning that feels great and lasts.
- 8 Resilient Phylon midsole provides lightweight cushioning while a high-density medial post adds support and helps mitigate excessive pronation through midstance.
- 9 Dynamic arch bridge midfoot shank boosts support and medial stability while allowing a degree of torsional rotation to unlock the foot's natural stabilizing mechanisms.

OUTSOLE

- 10 BRS 1000 carbon rubber in the heel for durability.
- 11 Center-of-pressure heel design helps disperse shock at impact.
- 12 A panel of Duralon blown rubber along the lateral forefoot contributes to improved cushioning and transition while also encouraging a more neutral and efficient stride through toe-off.
- 13 Women's-specific flex grooves along the length and width of the outsole provide a more dynamic platform underfoot for a smoother, more efficient stride.
- 14 Solid rubber in a Waffle Fill configuration provides great traction (even when off the beaten track) and adds cushioning.



KEY SELLING POINTS

- o Soft, resilient crash pad absorbs shock at impact and helps moderate the range and rate of pronation before midstance--extended further forward to accommodate faster-paced midfoot strikers.
- o Full-length Zoom Air unit for responsive cushioning that feels great and lasts.
- o Women's-specific Ortholite Heel Cradle sockliner provides a custom fit, enhances underfoot support and helps keep odor causing bacteria at bay.

CONSUMER PROFILE

Ideal if you are a neutral-to-mild overpronator and want a highly responsive training shoe that's durable enough for base-building distance and light enough for race-day speed.

INSIDE SCOOP

Air Zoom Elite 3's crash pad extends from the heel through the forefoot to accommodate the changes in foot strike associated with high-paced training. A great choice for midfoot strikers who land further forward on their feet, regardless of the pace.



STYLE # 314920

COLOR CODE(S) 141

WEIGHT 9.3 oz
(size 8)

LAST QMR 3

SIZE RANGE 5-12

RELEASE DATE 7/1



FOCUS ON FIT

A new QMR-3 last delivers an "Elite shoe fit." The fit around the midfoot and heel is snug to provide lock down necessary for faster-paced training or racing, while the fit through the forefoot is more accommodating to prevent pressure build-up across the metatarsals. The accommodating forefoot fit also provides a more comfortable environment for the foot, whether you are running a mile or a marathon.

QMR-3



WHAT'S NEW

Updates from the Air Zoom Elite 2:



- New Fitsole sockliner provides excellent comfort and support directly underfoot.



- Soft yet resilient crash pad is extended through the forefoot to help slow the rate of pronation, whether you are jogging or running at race pace.



- Natural Motion Engineering technology principles throughout the shoe result in a smoother ride and footstrike management that's more effective and more seamless.

Full-length Zoom Air unit sits directly underfoot for exceptional cushioning and response.



Beveled crash pad is articulated to absorb shock at initial impact and moderate both the range and rate of pronation before midstance. Extended through the forefoot to accommodate faster-paced, midfoot strikers.

The Bowerman Series is intended for recreational to elite runners who rely on consistent product that fits and feels great, has protective cushioning and provides stability appropriate for running in every day or every once in awhile.



Dynamic arch bridge midfoot shank enhances support and medial stability, while allowing a degree of torsional rotation to unlock the foot's intrinsic stabilizing mechanisms.

Lightweight Phylon midsole features a high-density medial post to help reduce the range of excessive pronation through midstance.



CONTACT PHASE

Beveled, articulated crash pad and a full-length Zoom Air unit work together to absorb the shock at initial impact and help moderate the range and rate of pronation for a smoother landing that reduces the load on the ankle and knee.



MIDSTANCE PHASE

A high-density medial post, an arch bridge midfoot shank and midfoot overlays work as one to progressively moderate the degree of excessive pronation. An arch bridge midfoot shank helps smooth the transition from contact through propulsion.



PROPULSION PHASE

Full-length Zoom Air cushioning combines with strategically-placed Duralon panels, deep flex grooves and a solid rubber Waffle outsole for cushioning, response and durability, while also promoting the natural resupination of the foot for a more neutral, efficient toe-off.

FITSOLE SOCKLINER



Fitsole sockliner features soft foam contained within a sculpted PU outer shell. This combination allows the sockliner to mold around the shape of your foot for a custom fit, while also providing exceptional support that won't fade with wear. A new softened arch improves comfort across a wider range of foot types.

Air Zoom Elite 3 [Mens]

RUN



ZOOM AIR



SUGGESTED PRICE \$100.00
CATEGORY Running
GENDER Mens
SILO Bowerman Series/
 Lightweight
SEASON Fall 2007



UPPER

- 1 Large expanses of open-mesh enhance comfort and breathability.
- 2 Strategically-placed synthetic leather overlays work in concert with the lacing system for a great fit and targeted support.
- 3 Flat-seam internal stitching keeps chafing at bay.
- 4 Built around a new "Elite shoe fit" (QMR-3) last that provides improved comfort and fit without sacrificing the support necessary for higher-paced training.
- 5 Fitsole sockliner molds to the shape of your foot for a custom fit and improved underfoot support. A new, softened arch improves comfort across a wider range of foot types.

MIDSOLE

- 6 Beveled crash pad absorbs the initial shock of impact and helps moderate both the range and rate of pronation before midstance. Crash pad is extended further forward to accommodate fast-paced midfoot strikers.
- 7 Full-length Zoom Air unit delivers responsive cushioning that feels great and lasts.
- 8 Resilient Phylon midsole provides lightweight cushioning while a high-density medial post adds support and helps mitigate excessive pronation through midstance.
- 9 Dynamic arch bridge midfoot shank boosts support and medial stability while allowing a degree of torsional rotation to unlock the foot's natural stabilizing mechanisms.



OUTSOLE

- 10 BRS 1000 carbon rubber in the heel for durability.
- 11 Center-of-pressure heel design helps disperse shock at impact.
- 12 A panel of Duralon blown rubber along the lateral forefoot contributes to improved cushioning and transition while also encouraging a more neutral and efficient stride through toe-off.
- 13 Deep flex grooves along the length and width of the outsole provide a more dynamic platform underfoot for a smoother, more efficient stride.
- 14 Solid rubber in a Waffle Fill configuration provides great traction (even when off the beaten track) and adds cushioning.

KEY SELLING POINTS

- o Soft, resilient crash pad absorbs shock at impact and helps moderate the range and rate of pronation before midstance--extended further forward to accommodate faster-paced midfoot strikers.
- o Full-length Zoom Air unit for responsive cushioning that feels great and lasts.
- o Nike Fitsole sockliner molds to the shape of your foot for a custom fit and enhanced underfoot support.

CONSUMER PROFILE

Ideal if you are a neutral-to-mild overpronator and want a highly responsive training shoe that's durable enough for base-building distance and light enough for race-day speed.

INSIDE SCOOP

Air Zoom Elite 3's crash pad extends from the heel through the forefoot to accommodate the changes in foot strike associated with high-paced training. A great choice for midfoot strikers who land further forward on their feet, regardless of the pace.



STYLE # 315163
COLOR CODE(S) 102
WEIGHT 11.2 oz
 (size 10)
LAST QMR-3
SIZE RANGE 6-13, 14,
 15
RELEASE DATE 7/1





FOCUS ON FIT

The QD-15 last is designed for up-tempo running. The fit around the midfoot and heel is snug to provide lock down necessary for faster-paced training and racing and a higher toe spring helps keep you further forward on your toes, for added quickness while racing or training.

QD-15



WHAT'S NEW

Updates to the Air Zoom Skylon include:



- Phylon carrier cradles the foot to enhance comfort and support.



- Phylite midsole/outsole allows for enhanced articulation to reduce weight and enhance flexibility for a more natural, efficient stride.



- Dynamic arch bridge midfoot shank enhances support while unlocking the foot's natural stabilizing mechanisms.



The Bowerman Series is intended for recreational to elite runners who rely on consistent product that fits and feels great, has protective cushioning and provides stability appropriate for running in every day or every once in awhile.



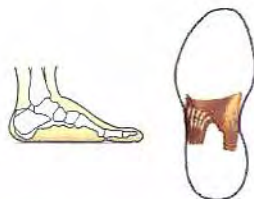
Full-length Zoom Air unit sits directly underfoot for exceptional cushioning, response and durability.

Dynamic arch bridge midfoot shank enhances support and medial stability, while allowing a degree of torsional rotation to unlock the foot's intrinsic stabilizing mechanisms.



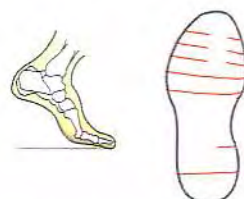
CONTACT PHASE

Beveled rearfoot construction works with rearfoot siping and a full-length Zoom Air unit to provide a smooth transition through midstance and immediate cushioning at impact.



MIDSTANCE PHASE

An arch bridge midfoot shank combines with an articulated Phylite midsole to help smooth the transition from contact through propulsion while allowing a more natural, efficient range of motion through midstance.



PROPULSION PHASE

Articulated forefoot works in tandem with strategically-placed segments of Phylite and solid rubber to help improve efficiency during propulsion by allowing a more natural, efficient range of motion.

MOLDED EVA SOCKLINER



Molded EVA sockliner conforms to the shape of your foot for enhanced comfort and improved underfoot support.

Air Zoom Skylon [Womens]



ZOOM AIR



RUN



SUGGESTED PRICE \$85.00
CATEGORY Running
GENDER Womens
SILO Bowerman Series/
 Lightweight
SEASON Fall 2007



UPPER

- 1 Large expanses of ultra-lightweight, open-mesh enhance comfort and breathability.
- 2 Supportive midfoot welds work in concert with the lacing system for seam-free comfort, a great fit and targeted support.
- 3 Reflective elements help with visibility at nighttime or early morning.
- 4 Molded EVA sockliner conforms to the to the shape of your foot for enhanced comfort and improved underfoot support.

MIDSOLE

- 5 Radiused lateral heel absorbs the initial shock of impact and provides a smooth transition from heel-strike through midstance.
- 6 Phylon carrier cradles the foot for enhanced cushioning and support.
- 7 Articulated Phylite midsole/outsole adds lightweight cushioning and enhances flexibility for a smoother, more efficient transition from heel-strike through toe-off.
- 8 Full-length Zoom Air unit delivers responsive cushioning that feels great and lasts.
- 9 Dynamic arch bridge midfoot shank boosts support and medial stability while allowing a degree of torsional rotation to unlock the foot's natural stabilizing mechanisms.

OUTSOLE

- 10 A combination of Phylite material and BRS 1000 carbon rubber provides lightweight durability and abrasion resistance while also promoting a more neutral and efficient toe-off.



KEY SELLING POINTS

- o Radiused lateral heel absorbs initial shock of impact and provides a smooth transition from heel strike through midstance.
- o Articulated Phylite midsole provides lightweight cushioning and enhances flexibility for a smoother, more efficient transition from heel strike through toe-off.
- o Natural Motion Engineering technology throughout the upper, midsole and outsole delivers a smooth ride for faster-paced training.

CONSUMER PROFILE

Ideal if you are a runner with a mildly underpronated to a mildly overpronated gait that seeks a responsive, lightweight shoe that is ideal for faster-paced training and racing.

STYLE # 316681
COLOR CODE(S) 171, 101
WEIGHT 8.8 oz (size 8)
LAST QD-15
SIZE RANGE 5-12
RELEASE DATE 7/1





FOCUS ON FIT

The QD-15 last is designed for up-tempo running. The fit around the midfoot and heel is snug to provide lock down necessary for faster-paced training and racing and a higher toe spring helps keep you further forward on your toes, for added quickness while racing or training.

QD-15



WHAT'S NEW

Updates to the Air Zoom Skylon include:



- Phylon carrier cradles the foot to enhance comfort and support.



- Phylite midsole/outsole allows for enhanced articulation to reduce weight and enhance flexibility for a more natural, efficient stride.



- Dynamic arch bridge midfoot shank enhances support while unlocking the foot's natural stabilizing mechanisms.



The Bowerman Series is intended for recreational to elite runners who rely on consistent product that fits and feels great, has protective cushioning and provides stability appropriate for running in every day or every once in awhile.



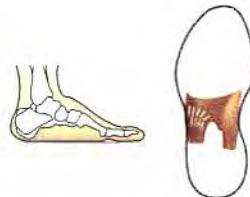
Full-length Zoom Air unit sits directly underfoot for exceptional cushioning, response and durability.

Dynamic arch bridge midfoot shank enhances support and medial stability, while allowing a degree of torsional rotation to unlock the foot's intrinsic stabilizing mechanisms.



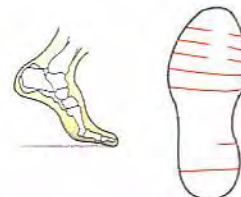
CONTACT PHASE

Beveled rearfoot construction works with rearfoot siping and a full-length Zoom Air unit to provide a smooth transition through midstance and immediate cushioning at impact.



MIDSTANCE PHASE

An arch bridge midfoot shank combines with an articulated Phylite midsole to help smooth the transition from contact through propulsion while allowing a more natural, efficient range of motion through midstance.



PROPULSION PHASE

Articulated forefoot works in tandem with strategically-placed segments of Phylite and solid rubber to help improve efficiency during propulsion by allowing a more natural, efficient range of motion.

MOLDED EVA SOCKLINER



Molded EVA sockliner conforms to the shape of your foot for enhanced comfort and improved underfoot support.

Air Zoom Skylon [Mens]



ZOOM
AIR



RUN



SUGGESTED PRICE \$85.00
CATEGORY Running
GENDER Mens
SILLO Bowerman Series/
Lightweight
SEASON Fall 2007



UPPER

- 1 Large expanses of ultra-lightweight, open-mesh enhance comfort and breathability.
- 2 Supportive midfoot welds work in concert with the lacing system for seam-free comfort, a great fit and targeted support.
- 3 Reflective elements help with visibility at nighttime or early morning.
- 4 Molded EVA sockliner conforms to the to the shape of your foot for enhanced comfort and improved underfoot support.

MIDSOLE

- 5 Beveled lateral heel absorbs the initial shock of impact and provides a smooth transition from heel-strike through midstance.
- 6 Phylon carrier cradles the foot to enhance cushioning and support.
- 7 Articulated Phylite midsole/outsole adds lightweight cushioning and enhances flexibility for a smoother, more efficient transition from heel-strike through toe-off.
- 8 Full-length Zoom Air unit delivers responsive cushioning that feels great and lasts.
- 9 Dynamic arch bridge midfoot shank boosts support and medial stability while allowing a degree of torsional rotation to unlock the foot's natural stabilizing mechanisms.

OUTSOLE

- 10 A combination of Phylite material and BRS 1000 carbon rubber provides lightweight durability and abrasion resistance while also promoting a more neutral and efficient toe-off.

KEY SELLING POINTS

- o Beveled lateral heel absorbs initial shock of impact and provides a smooth transition from heel strike through midstance.
- o Articulated Phylite midsole provides lightweight cushioning and enhances flexibility for a smoother, more efficient transition from heel strike through toe-off.
- o Natural Motion Engineering technology throughout the upper, midsole and outsole delivers a smooth ride for faster-paced training.

CONSUMER PROFILE

Ideal if you are a runner with a mildly underpronated to a mildly overpronated gait that seeks a responsive, lightweight shoe that is ideal for faster-paced training and racing.

STYLE # 316460
COLOR CODE(S) 171, 031
WEIGHT 11.1 oz (size 10)
LAST QD-15
SIZE RANGE 6-13, 14, 15
RELEASE DATE 7/1





FOCUS ON FIT

The women's Air Structure Triax+10 is built around the women's-specific QE-12 last that delivers a "Pegasus shoe fit." The last provides the comfortable, accommodating fit associated with the Air Pegasus shoe with a few adjustments to meet the distinct biomechanical needs of female runners with overpronated gaits.

QE-12



WHAT'S NEW

Updates from the Air Structure Triax 9 include:



- PU Nike Rideline footbed adds a full-length layer of soft, resilient foam directly underfoot for a smoother, better cushioned and more consistent ride mile after mile.



- A panel of Duralon blown rubber along the lateral forefoot improves cushioning and transition while also encouraging a more neutral and efficient stride through toe-off.



- Natural Motion Engineering technology principles throughout the shoe result in a smoother ride and footstrike management that's more effective and more seamless.



The Bowerman Series is intended for recreational to elite runners who rely on consistent product that fits and feels great, has protective cushioning and provides stability appropriate for running in every day or every once in awhile.

Forefoot Zoom Air unit provides unmatched cushioning, response and durability under the ball of the foot.

Dual-pressure, articulated Air-Sole unit in the heel allows for greater deflection at impact and works in tandem with the crash pad to deliver cushioning and a smooth transition into midstance.

Women's-specific, radiused and articulated crash pad absorbs the shock at initial impact and helps moderate the range and rate of pronation before midstance.



Dynamic arch bridge midfoot shank enhances support and medial stability, while allowing a degree of torsional rotation to unlock the foot's intrinsic stabilizing mechanisms.

Footbridge component works with the medial post (below) to progressively mitigate excessive pronation as the foot transitions from contact through midstance.

Lightweight Phylon midsole features a high-density medial post to help reduce the range of excessive pronation through midstance.



CONTACT PHASE

Women's-specific, radiused, articulated crash pad and an articulated heel Air-Sole unit work in tandem to absorb the shock at initial impact and help moderate the range and rate of pronation for a smoother landing that reduces the load on the ankle and knee.

MIDSTANCE PHASE

The Footbridge device, high-density medial post, arch bridge midfoot shank and midfoot overlays work as one to progressively moderate the degree of excessive pronation. An arch bridge midfoot shank helps smooth the transition from contact through propulsion.

PROPULSION PHASE

Zoom Air unit under the forefoot combines with a strategically-placed Duralon panel, deep flex grooves and a solid rubber Waffle outsole for cushioning, response and durability. Duralon across the lateral forefoot promotes the natural resupination of the foot for a more neutral, efficient toe-off.

ORHOLITE HEEL CRADLE SOCKLINER



Women's-specific, dual-density Otholite Heel Cradle sockliner provides a custom fit, improved underfoot support and support around the heel. The sockliner is engineered with permanent, non-migratory antimicrobial properties to help keep odor-causing bacteria at bay for a cool, comfortable environment underfoot.

Air Structure Triax+10 [Womens]

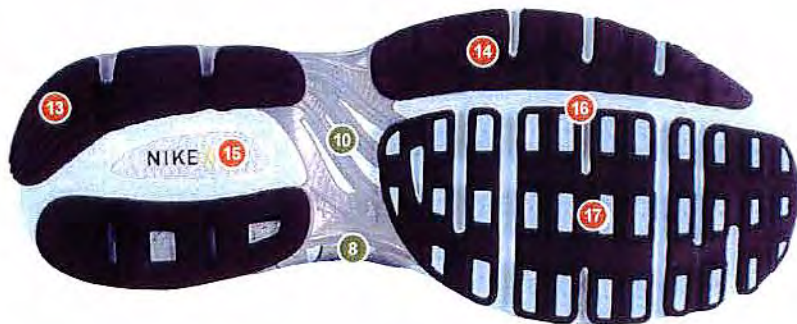
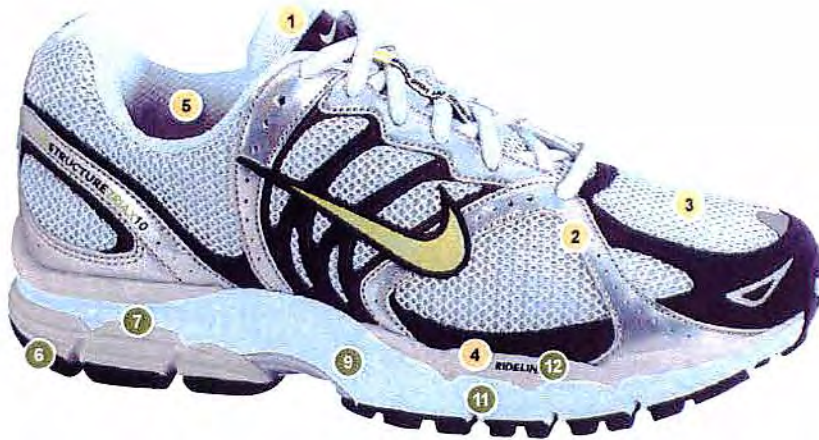


NIKE+



Nike+ Ready Shoe
Nike+ Pocket located under the sockliner, inside the midsole of the left shoe, provides a secure place for the sensor.

SUGGESTED PRICE \$90.00
CATEGORY Running
GENDER Womens
SILO Bowerman Series/Stability
SEASON Fall 2007



UPPER

- 1 Seamless tongue construction enhances comfort.
- 2 Overlays stabilize the foot over the midsole for enhanced lock down.
- 3 Expansive use of open mesh enhances comfort and breathability.
- 4 Built around a gender-specific last to accommodate the distinct shape of a woman's foot.
- 5 Women's-specific Ortholite Heel Cradle sockliner provides a custom fit and improved underfoot support. Antimicrobial properties help keep odor causing bacteria at bay.

MIDSOLE

- 6 Women's-specific radiused crash pad absorbs initial shock of impact, and helps moderate the range and rate of pronation before midstance.
- 7 Dual pressure, articulated Air-Sole unit in the heel allows for greater deflection at impact and works in tandem with the radiused and articulated crash pad to deliver a smooth transition from heel-strike through midstance.
- 8 Footbridge component helps reduce the range of pronation through midstance.
- 9 Resilient Phylon midsole provides lightweight cushioning, while a high-density medial post adds support and helps reduce excessive pronation through midstance.
- 10 Dynamic arch bridge midfoot shank enhances support and medial stability while allowing a degree of torsional rotation to unlock the foot's natural stabilizing mechanisms.
- 11 Zoom Air unit in the forefoot delivers responsive cushioning that feels great and lasts.
- 12 PU Nike Rideline footbed offers a softer, well-cushioned ride from heel strike to toe-off.

OUTSOLE

- 13 BRS 1000 carbon rubber for maximum abrasion resistance at high-wear zones.
- 14 A panel of Duralon blown rubber along the lateral forefoot contributes to improved cushioning and transition while also encouraging a more neutral and efficient stride through toe-off.
- 15 Center-of-pressure heel design to help disperse shock at impact.
- 16 Women's-specific flex groove configuration along the length and width of the outsole provides a more dynamic platform for a smoother, more efficient stride.
- 17 Solid rubber in a Waffle Fill configuration provides great traction (even when off the beaten track) and adds cushioning.

KEY SELLING POINTS

- o Natural Motion Engineering technology tailored for female runners who tend to overpronate.
- o An Air-Sole unit in the heel and Zoom Air unit in the forefoot contribute to exceptional cushioning that goes the distance.
- o PU Nike Rideline footbed improves transition for a smooth, consistent ride.

CONSUMER PROFILE

Ideal if you are a mild to moderate over-pronator who needs added medial support but don't want to sacrifice comfort, cushioning or a smooth, seamless transition from heel strike through toe-off.

INSIDE SCOOP

Air Structure Triax+10 is designed from the inside out and the ground up to work in harmony with the distinct shape of a woman's foot. Women's-specific features include: the QE-12, women's-specific last, a flex-groove pattern that enhances flexibility, a radiused crash pad and an Ortholite Heel Cradle sockliner.

STYLE # 315335
COLOR CODE(S) 131, 141
WEIGHT 10.2 oz
(size 8)
LAST QE-12
SIZE RANGE 5-12
RELEASE DATE 7/1





FOCUS ON FIT

The brand new QMR-1 last is built specifically for runners who overpronate. The QMR-1 last provides a roomier forefoot and also has a bit more room through the midfoot and heel compared to the neutral fit (QMR-2) last which better suits the overpronated foot type.

QMR-1



WHAT'S NEW

Updates from the Air Structure Triax 9 include:



- PU Nike Rideline footbed adds a full-length layer of soft, resilient foam directly underfoot for a smoother, better cushioned and more consistent ride mile after mile.



- A panel of Duralon blown rubber along the lateral forefoot improves cushioning and transition while also encouraging a more neutral and efficient stride through toe-off.



- Natural Motion Engineering technology principles throughout the shoe result in a smoother ride and footstrike management that's more effective and more seamless.

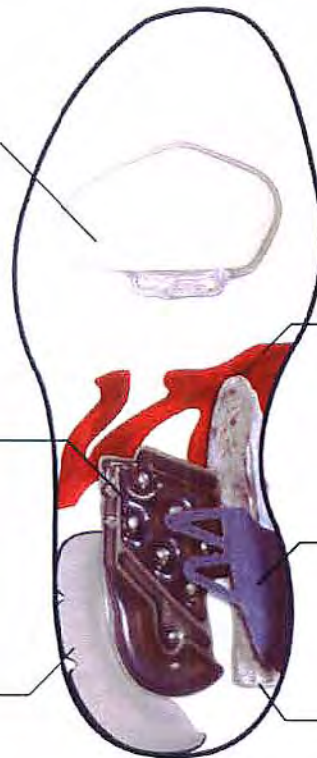


The Bowerman Series is intended for recreational to elite runners who rely on consistent product that fits and feels great, has protective cushioning and provides stability appropriate for running in every day or every once in awhile.

Forefoot Zoom Air unit provides unmatched cushioning, response and durability under the ball of the foot.

Dual pressure, articulated Air-Sole unit in the heel allows for greater deflection at impact and works in tandem with the crash pad to deliver cushioning and a smooth transition into midstance.

Beveled and articulated crash pad helps absorb the shock at initial impact and moderates the range and rate of pronation before midstance.



Dynamic arch bridge midfoot shank enhances support and medial stability, while allowing a degree of torsional rotation to unlock the foot's intrinsic stabilizing mechanisms.

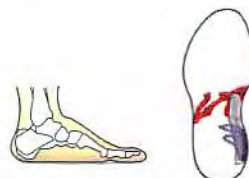
Footbridge component works with the medial post (below) to progressively mitigate excessive pronation as the foot transitions from contact through midstance.

Lightweight Phylon midsole features a high-density medial post to help reduce the range of excessive pronation through midstance.



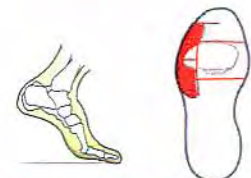
CONTACT PHASE

Beveled, articulated crash pad and an articulated heel Air-Sole unit work in tandem to absorb the shock at initial impact and help moderate the range and rate of pronation for a smoother landing that reduces the load on the ankle and knee.



MIDSTANCE PHASE

The Footbridge device, a high-density medial post, an arch bridge midfoot shank and midfoot overlays work as one to progressively moderate the degree of excessive pronation. An arch bridge midfoot shank helps smooth the transition from contact through propulsion.



PROPULSION PHASE

Zoom Air unit under the forefoot combines with a strategically-placed Duralon panel, deep flex grooves and a solid rubber Waffle outsole for cushioning, response and durability. Duralon across the lateral forefoot promotes the natural resupination of the foot for a more neutral, efficient toe-off.

FITSOLE SOCKLINER



Fitsole sockliner features soft foam contained within a sculpted PU outer shell. This combination allows the sockliner to mold around the shape of your foot for a custom fit, while also providing exceptional support that won't fade with wear. A new softened arch improves comfort across a wider range of foot types.

Air Structure Triax+10 [Mens]



(WIDTH)

ZOOM AIR

NIKE AIR



RUN



NIKE+



Nike+ Ready Shoe

Nike+ Pocket located under the sockliner, inside the midsole of the left shoe, provides a secure place for the sensor.



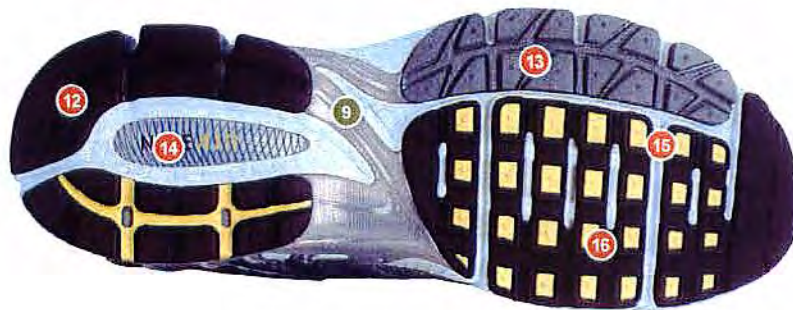
SUGGESTED PRICE \$90.00

CATEGORY Running

GENDER Mens

SIL0 Bowerman Series/Stability

SEASON Fall 2007



- 1 Seamless tongue construction enhances comfort.
- 2 Overlays stabilize the foot over the midsole for enhanced lock down.
- 3 Expansive use of open mesh enhances comfort and breathability.
- 4 Nike Fitsole sockliner molds to the shape of your foot for a custom fit and improved underfoot support. Plus, a new, softened arch improves comfort across a wider range of foot-types.

MIDSOLE

- 5 Beveled crash pad absorbs initial shock of impact, and helps moderate the range and rate of pronation before midstance.
- 6 Dual pressure, articulated Air-Sole unit in the heel allows for greater deflection at impact and works in tandem with the radiused and articulated crash pad to deliver a smooth transition from heel-strike through midstance.
- 7 Footbridge component helps reduce the range of pronation through midstance.
- 8 Resilient Phylon midsole provides lightweight cushioning, while a high-density medial post adds support and helps reduce excessive pronation through midstance.
- 9 Dynamic arch bridge midfoot shank enhances support and medial stability while allowing a degree of torsional rotation to unlock the foot's natural stabilizing mechanisms.
- 10 Zoom Air unit in the forefoot delivers responsive cushioning that feels great and lasts.
- 11 PU Nike Rideline footbed offers a softer, well-cushioned ride from heel strike to toe-off.

OUTSOLE

- 12 BRS 1000 carbon rubber for maximum abrasion resistance at high-wear zones.
- 13 A panel of Duralon blown rubber along the lateral forefoot contributes to improved cushioning and transition while also encouraging a more neutral and efficient stride through toe-off.
- 14 Center-of-pressure heel design to help disperse shock at impact.
- 15 Deep flex grooves along the length and width of the outsole provide a more dynamic platform for a smoother, more efficient stride.
- 16 Solid rubber in a Waffle Fill configuration provides great traction (even when off the beaten track) and adds cushioning.

KEY SELLING POINTS

- o Natural Motion Engineering technology for runners who tend to overpronate.
- o Air-Sole unit in the heel and Zoom Air unit in the forefoot contribute to exceptional cushioning that goes the distance.
- o PU Nike Rideline footbed improves transition for a smooth, consistent ride.

CONSUMER PROFILE

For the mild to moderate over-pronator who needs added medial support but doesn't want to sacrifice comfort, cushioning or a smooth transition from heel strike through toe-off.

INSIDE SCOOP

Available in narrow and wide sizes.

STYLE# 315166, 315167, 315168

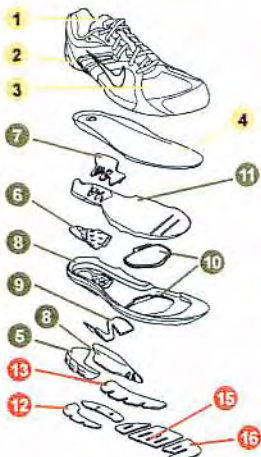
COLOR CODE(S) 103, 101

WEIGHT 13.1 oz (size 10)

LAST QMR-1

SIZE RANGE 6-13, 14, 15

RELEASE DATE 7/1





FOCUS ON FIT

The women's Air Pegasus+2007 is built around the women's-specific QE-12 last that delivers a "Pegasus shoe fit." The last provides the comfortable, accommodating fit associated with the Air Pegasus shoe with a few adjustments to meet the distinct biomechanical needs of female runners.

QE-12



WHAT'S NEW

Updates from the Air Pegasus 2006 include:



- PU Nike Rideline sits directly underfoot to enhance comfort and provide a seamless transition through footstrike.



- Women's-specific, radiused crash pad features enhanced articulation to absorb the shock at initial impact, smooth the transition through midstance and adaptively manage pronation.

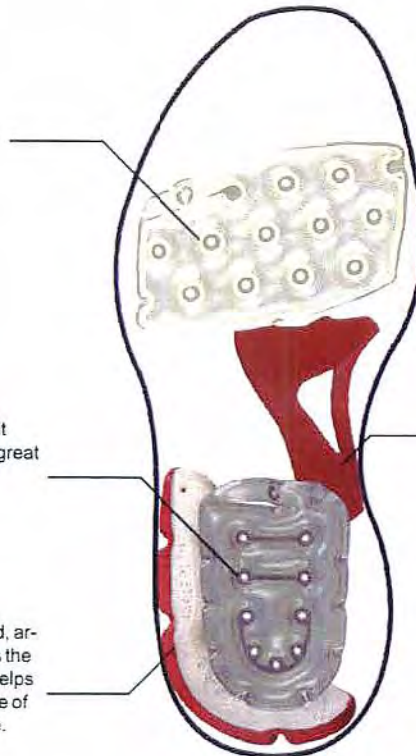


- A reduced number of strategically-placed overlays on the upper provides great lock down over the midsole while also enhancing comfort for a great fit and feel.

Encapsulated forefoot Air-Sole unit provides cushioning that feels great and lasts.

Encapsulated heel Air-Sole unit provides cushioning that feels great and lasts.

Women's-specific, radiused, articulated crash pad absorbs the shock at initial impact and helps moderate the range and rate of pronation before midstance.



The Bowerman Series is intended for recreational to elite runners who rely on consistent product that fits and feels great, has protective cushioning and provides stability appropriate for running in every day or every once in awhile.

Dynamic arch bridge midfoot shank enhances support and medial stability, while allowing a degree of torsional rotation to unlock the foot's intrinsic stabilizing mechanisms.



CONTACT PHASE

Women's-specific, radiused, articulated crash pad and a heel Air-Sole unit work together to absorb the shock at initial impact and help moderate the range and rate of pronation for a smoother landing that reduces the load on the ankle and knee.



MIDSTANCE PHASE

An arch bridge midfoot shank and midfoot overlays work as one to progressively moderate the degree of excessive pronation. An arch bridge midfoot shank helps smooth the transition from contact through propulsion.



PROPULSION PHASE

An encapsulated Air-Sole unit under the forefoot combines with deep flex grooves and a solid rubber Waffle Fill configuration for cushioning, flexibility and durability.

ORTHOLITE HEEL CRADLE SOCKLINER



Women's-specific, dual-density Ortholite Heel Cradle sockliner provides a custom fit, improved underfoot support and support around the heel. The sockliner also helps maintain a cool, comfortable environment underfoot and is engineered with permanent, non-migratory antimicrobial properties to help keep odor-causing bacteria at bay.

Air Pegasus+ 2007 [Womens]



(WIDTH)

NIKE AIR



RUN



NIKE+



Nike+ Ready Shoe

Nike+ Pocket located under the sockliner, inside the midsole of the left shoe, provides a secure place for the sensor.



SUGGESTED PRICE \$85.00

CATEGORY Running

GENDER Womens

SILO Bowerman Series/
Cushioning

SEASON Fall 2007

FEATURES

- 1 Expansive use of open mesh provides exceptional breathability and comfort.
- 2 Strategically-placed synthetic-leather overlays integrate with the lacing system to lock down the foot over the midsole.
- 3 Women's-specific Ortholite Heel Cradle sockliner provides a custom fit and improved underfoot support. Antimicrobial properties help keep odor-causing bacteria at bay.

MIDSOLE

- 4 Full-length PU Nike Rideline footbed sits directly underfoot to enhance comfort and provide a seamless transition through footstrike.
- 5 Encapsulated Air-Sole units under the heel and forefoot provide cushioning that feels great and lasts.
- 6 Resilient Phylon midsole provides lightweight cushioning.
- 7 Women's-specific radiused crash pad absorbs initial shock of impact, smooths the transition from contact to midstance and adaptively manages pronation—a benefit even for neutral runners as they tire near the end of a run.
- 8 Dynamic arch bridge midfoot shank enhances support under the medial arch and allows a degree of torsional rotation to unlock the foot's natural stabilizing mechanisms.

OUTSOLE

- 9 BRS 1000 carbon rubber for maximum abrasion resistance in high-wear zones.
- 10 Center-of-pressure heel design helps disperse shock at impact.
- 11 Women's-specific flex grooves along the length and width of the shoe's base yield a much more dynamic platform underfoot for a smoother, more efficient stride.
- 12 Solid rubber in a Waffle Fill configuration provides great traction (even off the beaten track) and adds cushioning.



KEY SELLING POINTS

- o Air-Sole units in the heel and forefoot contribute to exceptional cushioning that feels great and lasts.
- o PU Nike Rideline footbed improves transition for a smooth, consistent ride.
- o Gender-specific Natural Motion Engineering technology is applied throughout the shoe for a smooth, efficient ride.

CONSUMER PROFILE

The Air Pegasus+2007 shoe is a great choice if you have a mildly underpronated to mildly overpronated gait and seek a long-wearing shoe with top-notch comfort, fit and cushioning.

INSIDE SCOOP

The Women's Air Pegasus+2007 shoe is built around Nike's women's-specific QE-12 "Pegasus shoe fit" last that delivers a comfortable, accommodating fit through the forefoot and a snug, supportive fit through the midfoot and heel—the perfect combination for distance training. Compared to the men's "Pegasus shoe fit" last, the QE-12 is more accommodating across the forefoot and more snug around the heel for a women's-specific fit and feel.

The women's Air Pegasus+2007 shoe is now available in Narrow and Wide sizes.

STYLE # 316506
COLOR CODE(S) 181, 101
WEIGHT 11.7 oz (size-8)
LAST QE-12
SIZE RANGE 5-12
RELEASE DATE 7/1

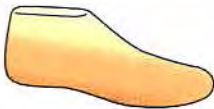




FOCUS ON FIT

The Air Pegasus+2007 is built around the new QMR-2 last and delivers a "Pegasus shoe fit." The QMR-2 last is engineered to deliver a comfortable, accommodating fit through the forefoot and a snug supportive fit through the midfoot and heel—the perfect combination for distance training.

QMR-2



WHAT'S NEW

Updates from the Air Pegasus 2006 include:



- PU Nike Rideline footbed sits directly underfoot to enhance comfort and provide a seamless transition through footstrike.



- Beveled crash pad features enhanced articulation to absorb the shock at impact, smooth the transition through midstance and adaptively manage pronation.

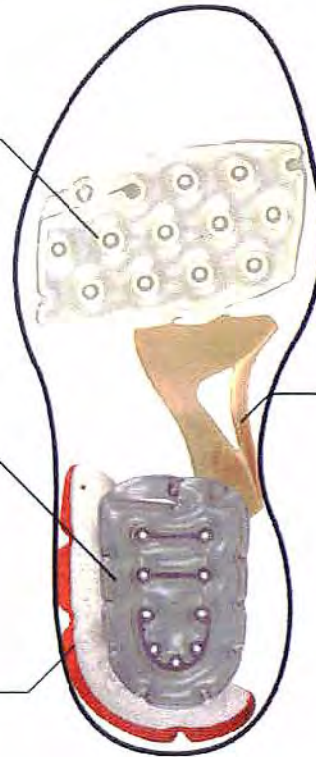


- A reduced number of strategically-placed overlays on the upper provide great lock down over the midsole while also enhancing comfort for a great fit and feel.

Encapsulated forefoot Air-Sole unit provides cushioning that feels great and lasts.

Encapsulated heel Air-Sole unit provides cushioning that feels great and lasts.

Beveled and articulated crash pad absorbs the shock at initial impact and helps moderate the range and rate of pronation before midstance.



The Bowerman Series is intended for recreational to elite runners who rely on consistent product that fits and feels great, has protective cushioning and provides stability appropriate for running in every day or every once in awhile.



Dynamic arch bridge midfoot shank enhances support and medial stability, while allowing a degree of torsional rotation to unlock the foot's intrinsic stabilizing mechanisms.



CONTACT PHASE

Beveled, articulated crash pad and a heel Air-Sole unit work together to absorb the shock at initial impact and help moderate both the range and rate of pronation for a smoother landing that reduces the load on the ankle and knee.



MIDSTANCE PHASE

An arch bridge midfoot shank and midfoot overlays work as one to progressively moderate the degree of excessive pronation. An arch bridge midfoot shank helps smooth the transition from contact through propulsion.



PROPULSION PHASE

An encapsulated Air-Sole unit under the forefoot combines with deep flex grooves and a solid rubber Waffle Fill configuration for cushioning, flexibility and durability.

FITSOLE SOCKLINER



Fitsole sockliner features soft foam contained within a sculpted PU outer shell. This combination allows the sockliner to mold around the shape of your foot for a custom fit, while also providing exceptional support that won't fade with wear. A new softened arch improves comfort across a wider range of foot types.

Air Pegasus+2007 [Mens]



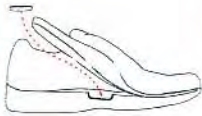
NIKE AIR



RUN



NIKE+



Nike+ Ready Shoe

Nike+ Pocket located under the sockliner, inside the midsole of the left shoe, provides a secure place for the sensor.



SUGGESTED PRICE \$85.00

CATEGORY Running

GENDER Mens

SILO Bowerman Series/

Cushioning

SEASON Fall 2007



UPPER

- 1 Expansive use of open mesh provides exceptional breathability and comfort.
- 2 Overlays are kept to a minimum and are strategically-placed for a balanced blend of a locked-down fit and long-distance comfort.
- 3 Nike Fitsole sockliner molds to the shape of your foot for a custom fit and improved underfoot support. Plus, a new, softened arch improves comfort across a wider range of foot-types.

MIDSOLE

- 4 Full-length PU Nike Rideline footbed sits directly underfoot to enhance comfort and provide a seamless transition through footstrike.
- 5 Encapsulated Air-Sole units under the heel and forefoot provide cushioning that feels great and lasts.
- 6 Lightweight, resilient Phylon midsole provides responsive cushioning.
- 7 De-coupled and articulated crash pad absorbs initial shock of impact, smooths the transition from contact to midstance and adaptively manages pronation—a benefit even for neutral runners as they tire near the end of a run.
- 8 Dynamic arch bridge midfoot shank enhances support under the medial arch and allows a degree of torsional rotation to unlock the foot's natural stabilizing mechanisms.

OUTSOLE

- 9 BRS 1000 carbon rubber for maximum abrasion resistance in high-wear zones.
- 10 Center-of-pressure heel design helps disperse shock at impact.
- 11 Deep flex grooves along the length and width of the shoe's base yield a much more dynamic platform underfoot for a smoother, more efficient stride.
- 12 Solid rubber in a Waffle Fill configuration provides great traction (even off the beaten track) and adds cushioning.

KEY SELLING POINTS

- o Air-Sole units in the heel and forefoot contribute to exceptional cushioning that feels great and lasts.
- o PU Nike Rideline footbed improves transition for a smooth, consistent ride.
- o Natural Motion Engineering technology is applied throughout the shoe for a smooth, efficient ride.

CONSUMER PROFILE

The Air Pegasus+2007 shoe is a great choice if you have a mildly underpronated to mildly overpronated gait and seek a long-wearing shoe with top-notch comfort, fit and cushioning.

INSIDE SCOOP

The Air Pegasus+2007 shoe is built around Nike's new QMR-2 "Pegasus shoe fit" last that provides a comfortable, accommodating fit through the forefoot and a snug, supportive fit through the midfoot and heel—a great combination for distance training.

Air Pegasus+2007 is now available in Narrow, Wide and Extra-Wide width sizes.

STYLE # 316464,
316832 (4e)

COLOR CODE(S) 401, 161

WEIGHT 13.1 oz
(size 10)

LAST QMR-2

SIZE RANGE 6-13, 14, 15

RELEASE DATE 7/1
















Track & Field

Sprint, Middle Distance and Distance Products



Nike sports shoes are manufactured to the exact specifications of champion athletes throughout the world. The Nike name and Swoosh are your guarantee of quality.

		100m	200m	400m	800m	1500m/mile	3k/2 mile	steeple	5k/3 mile	1000m	100m/110m hurdles	400m hurdles	high jump	long jump	triple jump	pole vault	javelin	discus/hammer throw	x country - pavement	x country - grass	
Sprint	Zoom Monsterfly 	●	●	●								●									
	Zoom Powercat 	●	●	●								●									
	Zoom Superfly R2 	●	●	●								●									
	Zoom Maxcat 2 			●	●	●						●	●								
	Zoom Lisista 	●	●	●								●	●								
	Zoom Bigbrotha 	●	●	●								●	●								
	Zoom Rival S 	●	●	●	●							●		●							
	Zoom Rival MD 			●	●	●						●	●	●	●	●					
	Zoom Miler 					●	●	●													●
	Zoom Ventulus 2 					●	●	●	●	●	●										●
	Zoom Shift Montreal 					●	●	●		●	●										●
	Zoom Lanang 					●	●	●													●
	Zoom Rival D 					●	●	●		●											●
	Zoom Jana Star 					●	●	●	●	●											●

DISTANCE



Track & Field

Distance/Cross Country and Field Products

Nike sports shoes are manufactured to the exact specifications of champion athletes throughout the world. The Nike name and Swoosh are your guarantee of quality.

		100m	200m	400m	800m	1500m/mile	3k/2 mile	steep	5k/3 mile	1000m	100m/110m hurdles	400m hurdles	high jump	long jump	triple jump	pole vault	javelin	discus/hammer throw	x country - pavement	x country - grass		
Streak XC										●	●									●	●	
Zoom Forever XC						●	●	●	●	●	●										●	
Zoom Waffle XC					●	●	●	●	●	●	●										●	
Zoom Jana Star XC					●	●	●	●	●	●	●										●	
Zoom Forever						●	●	●	●	●	●										●	●
Zoom Waffle Racer					●	●	●	●	●	●	●										●	●
Zoom Jana Star Waffle					●	●	●	●	●	●	●										●	●
Zoom PV 2																	●					
Zoom Javelin Elite																		●				
Zoom HJ 3														●								
Zoom LJ 3															●							
Zoom TJ																●						
Zoom Rotational 4																				●	●	
Zoom SD 2																				●	●	

DISTANCE / CROSS-COUNTRY

FIELD